

Some key laws written into the DCA include:

- Article 14, Section 4 of the NYS Constitution
- Article 25-AA of the NY Agriculture and Markets Law
- Article 49 Title 3 of the NY Environmental Conservation Law
- The Ad Hoc Task Force of Agriculture and NYC Watershed Regulations Policy Group
- The Constitution and By-Laws of the Watershed Agricultural Council of the NYC Watershed, Inc.

GOALS OF PHASE I

The Farm should be home to multiple uses (a diversified plan)

Potential uses should not duplicate those already in existence

The view-scape of the farm should remain the same

The farm should be self – sufficient (financially stable/sustainable)

Planning The Future of Tilly Foster Farm



- Physical Services Committee Meeting
 - May 15, 2014

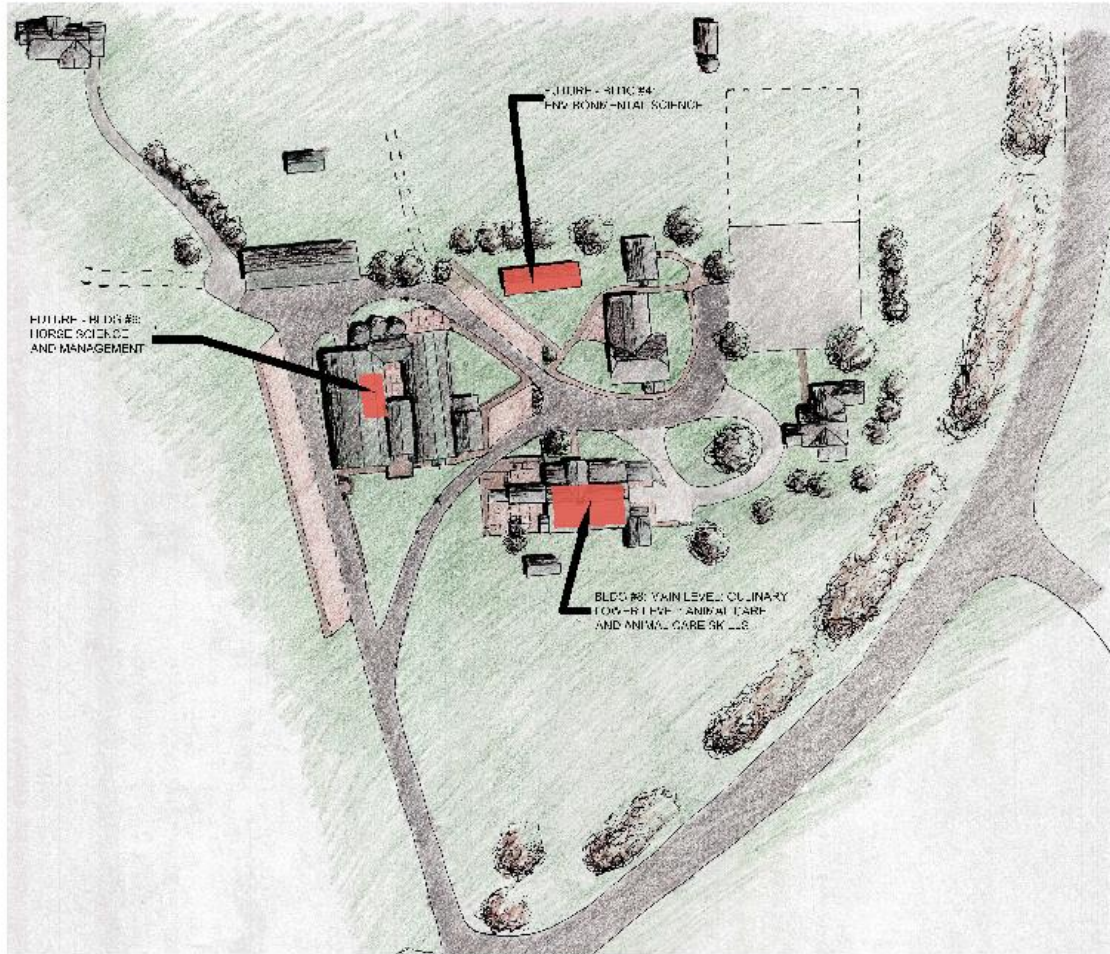
Mission Statement

Tilly Foster Farm is a Putnam County owned property and facility that fosters financial, environmental, social and historical stewardship through a variety of program offerings by means of public-private partnerships.

Where are we today?

- Two concurrent paths from the public meetings - Phase 1
 - Reintroduction of small, low maintenance animals to the farm that is interactive and publically accessible
 - Infrastructure repair and upgrades

**WAC and DEP approved scope and direction



TILLY FOSTER FARM
AERIAL VIEW
SCALE: NOT TO SCALE

2. VAN CO. J. W. PHIMMER
OFFICE WAYS & FACILITIES
1000 S. W. 11th St.
Fort Lauderdale, FL 33315
954.584.1111

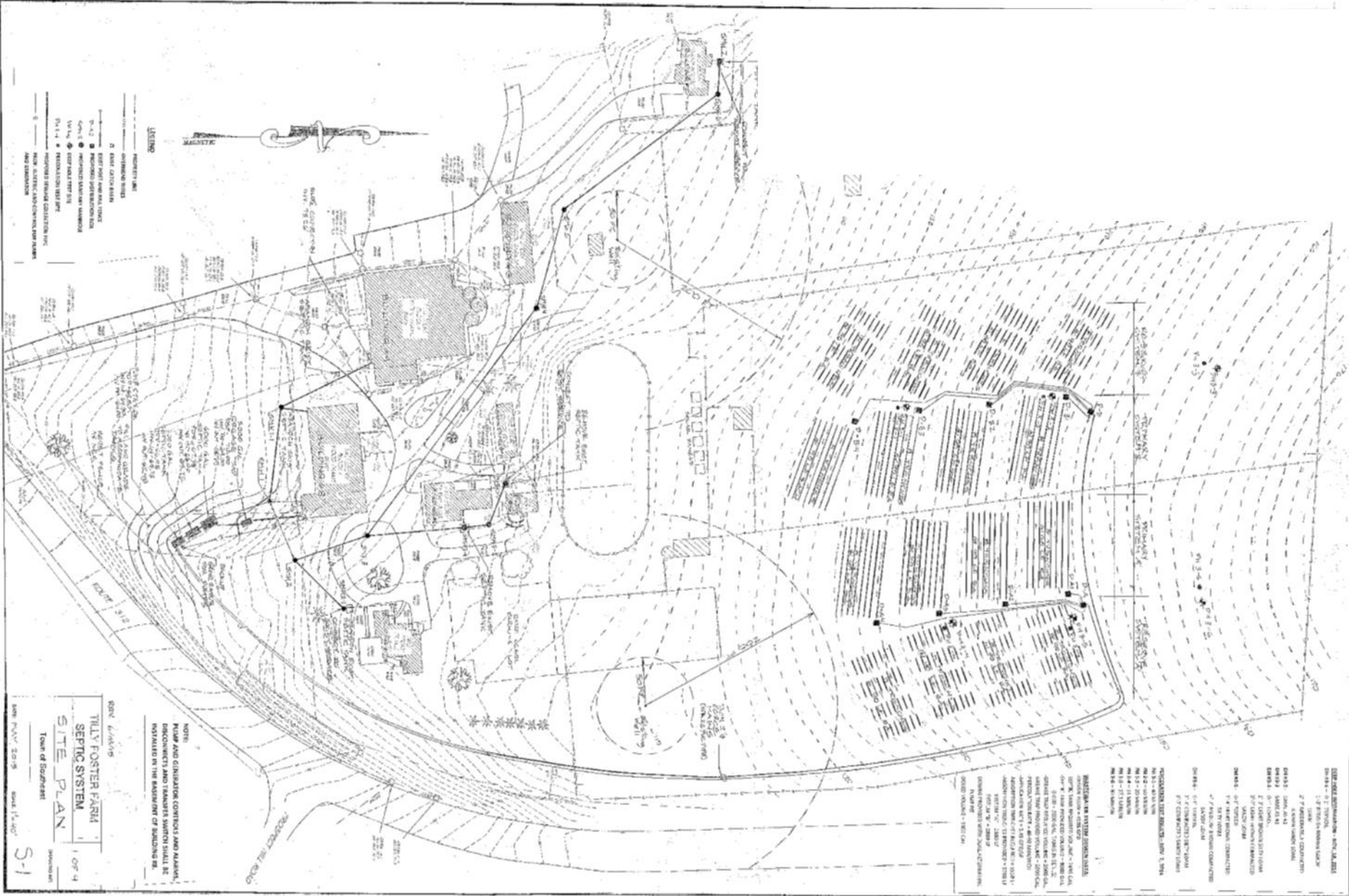


PRELIMINARY PRESENTATION FOR TILLY FOSTER FARM REDEVELOPMENT
PRELIMINARY SITE PLAN WITH PROPOSED BOCES CLASSROOM LOCATIONS

REVISION: 02-17-2014 DATE: JULY 2014 SCALE: 1/4"=1'-0"

PRELIM-05.0

Drawing from Original Presentation to BOCES on 07/31/14



Site Septic



TILLY FOSTER FARM
AERIAL VIEW
SCALE: NOT TO SCALE

PUTNAM COUNTY DEPARTMENT
OF HIGHWAYS & FACILITIES
COMMISSIONER: FRED PERA
DEPUTY COMMISSIONER: JOHN G. TILLY
840 Elm Street, Carmel, New York 12512
(845) 878-6222



PRELIMINARY PRESENTATION FOR TILLY FOSTER FARM REDEVELOPMENT DAM, CULVERT, AND POND REPAIR AND RESTORATION

PROJ. NO: 2014-TFF-01 | DATE: NOV 4, 2014 | SCALE: VARIES
DRAWING NO:

PRELIM-01.3B

Drawing from Original Presentation for DEP on 11/6/14







4-H Junior Vets Program

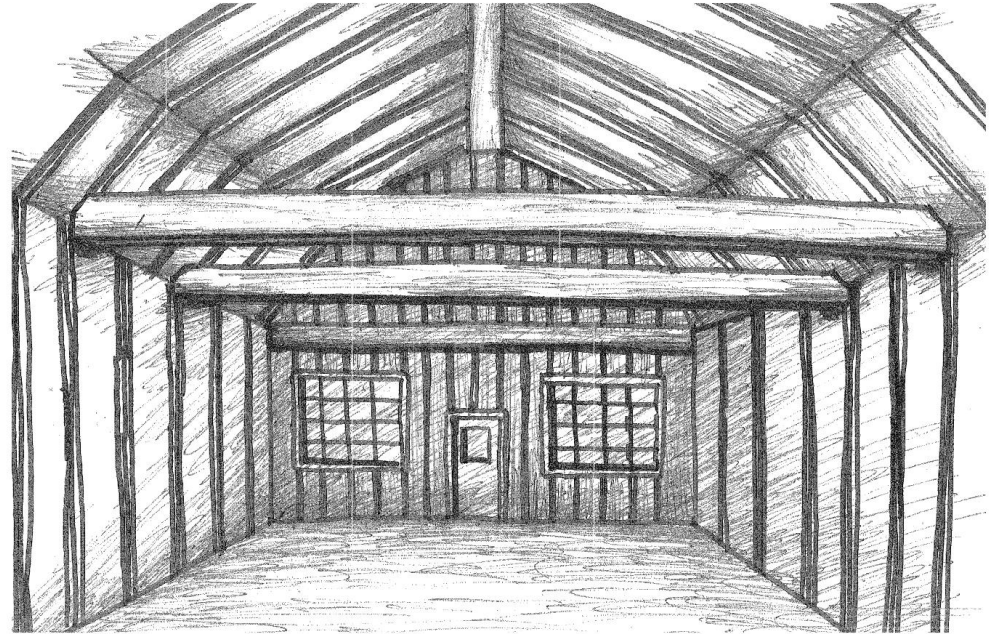




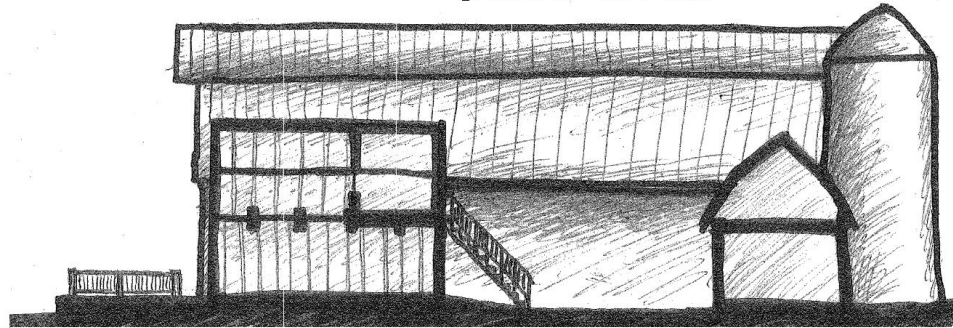
1 **BUILDING #9 (BARN) - EXISTING UPPER FLOOR - INTERIOR VIEW**
SCALE: NOT TO SCALE



2 **BUILDING #9 (BARN) - EXISTING MAIN FLOOR - INTERIOR VIEW**
SCALE: NOT TO SCALE



3 **BUILDING #9 (BARN) - PROPOSED INTERIOR VIEW**
SCALE: 3/8" = NOT TO SCALE



4 **BUILDING #9 (BARN) - PROPOSED SECTION**
SCALE: NOT TO SCALE

NOTE: ANY AND ALL PRELIMINARY DRAWINGS FROM THE PUTNAM COUNTY HIGHWAYS AND FACILITIES DEPARTMENT MAY OR MAY NOT CONTAIN ALL THE INFORMATION TO THE RENOVATION, DEMOLITION, AND/OR CONSTRUCTION FOR THE PROJECT AND/OR BUILDING. ADDITIONAL REVIEW AND DRAWINGS ARE NEEDED TO FINALIZE ANY DESIGN CONCEPT. ALL SQUARE FOOTAGES ARE ROUNDED AND ARE FOR PRELIMINARY USE ONLY. DRAWINGS ARE NOT FOR CONSTRUCTION.

PUTNAM COUNTY DEPARTMENT
OF HIGHWAYS & FACILITIES
COMMISSIONER: FRED FENA
DEPUTY COMMISSIONER: JOHN G. TULLY
842 Fair Street, Carmel, New York 10512
(845) 878-6331



PRELIMINARY PRESENTATION FOR TILLY FOSTER FARM REDEVELOPMENT
PRELIMINARY FLOOR PLANS FOR BLDG #9 (BARN)

PROJ NO: 2014-TFF-01 | DATE: MAY 29, 2014 | SCALE: VARIES
DRAWING NO:

PRELIM-02.3



Any Questions ?

